



Uganda Revenue Authority
DEVELOPING UGANDA TOGETHER



Eby'oshemereire kumanya waheza kwehandikiisa k'omushashuuzi w'omushoro

FY 2022-2023



Embrace e-Receipting & e-Invoicing

Monitor your business from anywhere using any mobile or Electronic Fiscal Device with the Electronic Fiscal Receipting and Invoicing System - EFRIS.

Electronic Fiscal Devices

Secure Business Records | Easy Filing of Tax Returns Faster And Easy Processing of Tax Refunds | Easy Tax Clearances...and so much more.

GET ONE TODAY!

For more information:

Website: www.ura.go.ug, **Email:** services@ura.go.ug

Call Toll Free: 0800117000, 0800217000

Ahari Kasitoma weitu ow'ekitinisa

Nitukusima ahabw'okwehandikiisa k'omushashuzi w'omushoro. Nitukuraganisa obuhereza bwamani omurugyendo oruwatandika orw'okuhikiriza obujunanizibwa bwawe obw'okushashura omushoro.

Obwingi bw'ekigambo kyeitu

Nitukuraganisa okukwanguhiza, obwire, okubaho, obwesigwa, turi kukuhiyaho obuhereza buri hamwe ahu orabe ori ahamuhendo gw'ahansi munonga.

Ebikwasiire ahari URA

Obujunanizibwa

Okugyereka, okukunganya hamwe n'okubaririra obwingi n'obukye bw'emishoro ya gavumenti eyagwagati (okwatirinemu n'entaasya etari y'emishoro) hamwe n'okuha obuhabuzi gavumenti aha mitwarize n'entegyeka yoburugo bw'entaasya yoona.

Okworekwa

Obuhereza bw'emishoro oburikuhindura Uganda okutunga okwetegyeka kw'entatsya n'eshohoza.

Obutumwa

Mukunganye emishoro y'okwombeka eihanga omumitwarize mirungi hamwe n'omubwegye

Ebigambo ry'entwaza

Turi ekitongore ekirikuhirikiriza enshonga za ba kasitoma beitu kandi nitugyezaho kukuza n'okwihayo abo'boona abeine entalanta nebiteiso/ ebitekyerezo ebisya eby'okutubasisa kuhisya obuhereza bwomuringo gw'omutaano ahari ba kasitoma.

Okugyenda neiwe

Hanu hariho obutumwa obw'okubasa kukuyamba twaba nitukutebenkanisa kuhika ahidaara/eitembezo by'okushashura omushoro oyekundire kuruga ahamutiima gwawe. Timu y'okuyamba empamushoro n'eza kuba n'ekuhabura kumara ameezi ashatu, twaheza nitukuhayo owa ofisii y'omwanya gwawe eb'eriyo yaguma n'ekurebereera. Nitukushaba ngu ogume n'otusindikira ebirakuteganise kurabira ahari email emwe onboarding@ura.go.ug

Bwanyima y'okwehandikiisa na URA kandi okatunga TIN, nooyetaaga kuza aha akaunti yaawe aha portal ya URA orikukozesa engendererwaho egi:

1. Za aha mukutu gwa URA <https://ura.go.ug>.
2. Aha mukono gwa buryo, omunshonda, nyiga "LOGIN".
3. Taasyamu TIN yawe.
4. Omurundi gwawe gw'okubanza kuza aha akaunti yaawe, kyebera emailo yaawe (eyiwatireyo obu waabaire noohandiikisa TIN) otunge paasiwaadi y'okutaasyamu .
5. Hindura paasiwaadi reeru otaasyemu.
6. Garuka aha ntandikiro reeru otaasyemu orikukozesa paasiwaadi yaawe ensya.

Ahabwaki oshemereire kutunga akaunti y'eby'emishoro.

Neehwera omu kuheerezana obutumwa bw'ekihama n'eby'emishoro (otakaagaba paasiwaadi yaawe) kumanyisibwa kw'ahonaahohaagira ekyakukorerwa aha TIN yaawe

Okworeka entaasya n'enshozo yaawe?

- Kukuratira enshashura yoona erikukorwa
- Okuhayo okushaba n'okwanga
- Kutereza ebikwatiraine na TIN yaawe
- Okuhindura za motoka
- Okuprintinga za kaadi za motoka
- Okuronda ba agenti omu bandi boona

Obugabe N’obujunaanizibwa

Obugabe	Obujunaanizibwa
Obugabe bw’oburingaaniza n’okutwarizibwa gye omu mateeka	Reeba ngu waayehandiikisa n’ekitongore ky’ebyemishoro ekya Uganda Revenue Authority nk’omuhi w’omushoro.
Amateeka g’omushoro na n’ebigyendererwaho noyija kubikora buri kaire.	Yoreeka ebyentaasya n’enshohoza emishuuburo y’aheeru y’eihanga ninga burikaantu koonakakwatiraine n’ebyemishoro hamwe n’entasya endiyo
Byona ebyawe ebikwatiraine n’omushoro nibijja kukwatwa gye hatarimu kugwera embaju	Shashura omushoro oguhikire omu bwire bw’enyini nk’oku kirikwetaagwa omu mateeka agahikire.
Iwe n’agenti waawe nimwija kuteekateekwaho kuba ab’amaziima mpaka ahi muraagarugireho.	Ba owamazima waaba nookoragana n’eby’emishoro.
Ebikwatiraine n’omushoro gwaawe nibyija kubiikwa nk’ekihama, kandi ebikwatiraine n’omushoro ebi twine nibiza kukozeesibwa nka ebiragiro birikuragira.	Omukukora aha nshonga zaawe ezikwatiraine n’omushoro, iwe na agenti oronzirwe nimwija kukoragana, kandi mukwatanise n’abakozi ab’ekitongore abarikwikirizibwa boonka.
Iwe n’agenti waawe ayikiriziibwe, nimwija kuheebwa obutumwa oburikukyengwa, bwaaba nibweetagwa kandi ahabwire	Heereza enamba yaawe ya TIN omu kukoragana kwaawe kwoona nabe by’emishoro.
Nooyija kushashura omushoro oguhikire buri kaire	Otakayejumbira omu muringo gwoona ogwobutashashura omushoro na nemiringo endiyo etari kwikirizibwa.
Noija kutunga obuheereza obuhikire kandi obukugu obwiire bwoona.	Waaba nooreeta ninga notwaara eby’amaguzi kozeesa obuheereza bwa agent ayehandikise omu butongore okuheza entasya na n’ebikwaatiraaine n’ebyenshuubura yaawe omubutoongore.
Noija kutunga okugarukwamu aha bibuuzo, okwetoomboita niinga okushaba kwaawe omu bwiire, biri kukyengwa, kaandi nk’oku ori kubyetaaga	Hereza ab’ebyemishoro abari kukwaata aha by’enshuubura byaawe kandi ebihikire buri kaire
Noija kuheebwa enshonga y’okusharamu okwakorwa.	Manyisa ab’ebyemishoro kuwakuba noyeta omuvunuuzi, ebyetaago na n’ebigyendererwaho
Noija kumanyiisibwa aha bikwatiraine n’obujunaanizibwa bwaawe.	Manya kaandi okuratire ebya customs, okukingirana, Ebyenyamaishwa,esente hamwe na okushaabaara
Obutaikirizana n’eby’emishoro yaawe nikwija kureebwa nk’oku ebiragiro n’entwaza birikuragira.	Waaba noza aharugyendo, rebeke ngu wamaririzagye kurungi kwijuzza empapura ezirikwetaaga kwijuzibwa otakahikire ahorikuhikira ninga ahokutaandikira
Noija Kuyabimbwa omu kukozeesa obugabe bwaawe oku hereza okushaba omukitoongore ky’ebyemishoro ninga omu bukiiko bw’eby’emishoro nk’oku amateeka gakuragiira	Yoreka ebintu byaawe waahika ahuokuza deru obitebekanisize okukyeberwa.
Noija kuheebwa okumanyiisibwa omwanya gwaawe gwaaba niguza kukyeberwa obwiire bwoona, ninga kuhakubaho okukyondooza kwoona.	Twaza abakoozi bebyomushoro kurungi nana ekitinisa.
Akaunti yaawe yokuheeraho omushoro neyija kumanyiisibwa buri mushoro ogwashashurwa.	Kwatanisa na byona ebikwatiraine nomushoro.
Nitwija kuguma na n’ebikwatiraine neby’emishoro ebiri aha mutiindo	
Nitwija kuguma na n’ebikwatiraine neby’emishoro ebiri aha mutiindo	
Ahi oyine kugarurizibwa omushoro guwashashwiire, nitwija kukuratira engyenderwaho n’obwire nk’oku amateeka hamwe na bagyeeti birikuragira	
Nitwija kukora aha bintu byaawe byoona ebikwatiraine n’emishoro nk’oku amateeka gakuraagira.	

Okwanjura entatsya yaawe

Kworobyamu, return n’okworeka kwomuhi w’omushoro arikukora omuba’eby’emishoro oku abaire naashashura

omubwiire obwo hamwe n'omushoro ugu arashashure ahabwa obwire obwo. Returns zirimu ebikwatiraine na n'ebyo bushuubuzi hamwe n'okwegyerekyera. Za return niziragiirwa kuteebwayo aha biro ebiragiirwe n'okubikwoorekwa ahaifo.

Obwire	Emiringo y'areturns	Ebiro rya return	Ebiro ry'okushashura
Omwaka	Return yokutandikiraho erikwerekwa entebereza ye'ntatsya hamwe nentebereza y'omushoro gw'omuntu owaburijo.	Eizooba ry'ahamuheru ery'okweezi kwakashatu ahanyima y'okutandika kw'omwaka gw'entatsya.	Okushashura ebicweeka emirundi ebiri obutarenzya ebiro ashaatu nakimwe by'okweezi kw'ikumi n'ibiri omumwaka gw'entatsya
	Return ey'ahamuheru erikwerekwa o'mushoro gurikuruga ah'antatsya erikuruga aha magoba ga buzinesi yo muntu waburijo.	Eizooba ry'ahamuheru ery'okweezi kwamukaga ahanyima y'okuhwa kw'omwaka gw'entaasya.	Emirundi ebiri eyahamuheru eshomerire kuba yashashurwe kutarenga ebiro 30 ryokwamukaga omumwaka gw'entatsya.
	Return yokutandikiraho erikwerekwa entebereza ye'ntatsya hamwe nentebereza y'omushoro gw'ebitongore.	Eizooba ry'ahamuheru ery'okweezi kwamukaga ahanyima y'okutandiika kw'omwaka gw'entaasya.	Omurundi gumwe gushomerire kushashugwa ebiro 31 ry'okwikumi n'ebiri omumwaka gw'esente bitakahikire.
	Return ey'ahamuheru erikwerekwa o'mushoro gurikuruga ah'antatsya erikuruga aha magoba ga buzinesi yo z'ebitongore	Eizooba ry'ahamuheru ery'okweezi kwamukaga ahanyima y'okuhwa kw'omwaka gw'entaasya.	Okushashura okwahamuheru ebiro 30 ry'okwamukaga omumwaka gw'entaasya.
	Return erikwerekwa amagooba, okufeerwa, engabaana, y'abantu abari kukorera hamwe buzinesi	Eizoba ry'amuheru omukwezi okwamukaga kw'omwaka gw'entaasya.	Okushashura okwamuheru obutarenzya ebiro 30 ry'okwamukaga omumwaka gw'entansya.
	Return y'omuntu otarikubika bihandiko,erikuteberezwa amagooba ah'antaansya(Presumptive tax)	Eizoba ry'amuheru omukwezi okwamukaga kw'omwaka gw'entaasya.	Eizoba ry'amuheru omukwezi okwamukaga ahamuheru gw'omwaka gw'entaasya.
	Return z'omuntu arikukozesebwa hamwe nomuntu oyine entaasya kuruga om'ukupangisa amaju.	Eizoba ry'amuheru omukwezi okwamukaga kw'omwaka gw'entaasya.	Okushashura emirundi ebiri okutarenga ebiro 30 ry'okwamukaga omumwaka gw'entaasya.
Burikwezi	Return y'omushoro gw'okukwatirwayo abebitongore (Withholding tax return)	Okutarenga ebiro 15 omukwezi okurikukurataho.	Okutarenga ebiro 15 omukwezi okurikukurataho.
	PAYE return(Returns zomushoro gurikusharwa ahabakoozi)	Okutarenga ebiro 15 omukwezi okurikukurataho.	Okutarenga ebiro 15 omukwezi okurikukurataho.
	Return za'Local Exercise Duty	Okutarenga ebiro 15 omukwezi okurikukurataho.	Okutarenga ebiro 15 omukwezi okurikukurataho.
	Return z'omushoro ogw'ery'emizano.(Gaming Tax return)	Okutarenga ebiro 15 omukwezi okurikukurataho	Okutarenga ebiro 15 omukwezi okurikukurataho.
	VAT returns ez'aburikwezi.	Okutarenga ebiro 15 omukwezi okurikukurataho.	Okutarenga ebiro 15 omukwezi okurikukurataho.

	Diplomatic VAT Return	Okutarenga ebiro 15 omukwezi okurikukurataho.	Obwire bwena obu kamishana arakuragire.
	Returns ezirikurunga ahari ba ba agentu abari kukoro assements omubwingi.	Okutarenga ebiro 15 omukwezi okurikukurataho.	Okutarenga ebiro 15 omukwezi okurikukurataho.
Burisande	Gaming Weekly tax return.	Orwakashatu gw'esande ekuratireho.	Orw'akashatu gw'esande ekuratireho.

Manya ebi

- Okuhayo eburugiremu kushemereire kukururirwa enshashura y'omushoro ogurikushashurwa.
- Okukyererwa kuhayo eburugiremu nikureetera ekibonerezo
- Okushashura kw'omushoro nikubaho ahaizooba ry'okuhayo eburugiremu
- Okushashura kikyereze omushoro ogurikushashurwa nikureetera okweyongera kw'amagoba

Okugyereka Omushoro

Omuhi w'omushoro ku arikuremwa kwegyerekyera omushoro nk'oku amateeka garikuragira, ekitongore ky'eby'emishoro nikiza kumugyerekyera omushoro ogwe. Ahansi y'ebiragiro, hariyo engyereka nyingi nka;

SN	Ekika ky'okukyebera	Ebiri kukikwataho
1.	Okugyereka waaba otegyerekyeire	Ekitongore ky'eby'emishoro nikibaasa kugyerekyera omuhi w'omushoro orikuremwa kwegyerekyera omushoro. Eki nikibaho byanyima y'omuhu w'omushoro kubura kwegyerekyera, kutamu omushoro mwingi (VAT) niinga ku hakuba hariyo omushoro ogurikushashurwa
2.	Okugyerekyera omushoro obwire bwagwe butakahikire	Ekitongore ky'ebyemishoro nikibaasa kugyerekyera omuhi w'omushoro kyareeba ngu naabaasa kukyererwa, kuremesa niinga kuheerezayo okushashura kutahikire, niinga kukunganya omushoro obwire bwagwe butakahikire
3.	Enyongyesereza aha mushoro gwoyegyerekyeire	Ekitongore ky'ebyemishoro nikibaasa kukora empinduka omu mushoro oguri kushashurwa. Eki nikibaasa kukorwa akaira koono kyareeba ngu hakabaho okusherekyerera omukwegyerekyera omushoro Haazoorebwa ebindi ebikwatiraine n'omuhi w'omushoro ahabw'obwire obwe

Okuhakanisa eby gyerekwa nari okushaba

Enshonga	Omushoro gw'omunda	Obwire oburi kuheebwa
Okuhakanisa ebya gyerekwa	Omuhi w'omushoro atarikwikirizana n'ensharamu y'omushoro okugyeza okugyerekyerwa, naabaasa kuhayo okwetomboita owa mukuru w'ekitongore ky'ebyemishoro Kushemereire kuba omu muringo guri kuyengwa kandi oyoreke gye enshonga ahi kyaruga Hashemereire kubaho obujurizi oburi kumara kushagika okwaanga	Omubiro makumi ana nabitano bwanyima y'okutunga okumanyisibwa okw'okusharamu
	Mukuru w'ekitongore ky'ebyemishoro nabaasa kwongyerayo obwiire bw'okuhayo okwaanga, yashaanga enshonga yaawe y'okwongyerayo	
	Mukuru w'ekitongore ky'ebyemishoro nabaasa kukora ensharamu y'okwetomboita ari kwikiriza byoona niinga bimwe aha bi washaba, kutuubya, kwongyeza, kutereza niinga kuta ensharamu aha rubaju Mukuru w'ekitongore ky'ebyemishoro naza kuhereza omuhi w'omushoro okumanyisa kw' ensharamu y'ebyabaire naayetombwitwaho	Omu biro kyenda kuruga ah'eizooba ry'okutunga okwaanga Noomanyisibwa ngu obu obwire oburikuheebwa kukora ensharamu y'okwetomboita neehebwa ku engarukamu y'okureba eby'omuhi w'omushoro birikwetaaga kutereezibwa aha kwanga, kandi omuhi w'omushoro naomanyisibwa
	Ahi ensharamu y'okuhakanisa etakahairwe omu biro kyenda, omuntu arikuhayo okuhakanisa naabaasa okuhayo okumanyisa omu kuhandikira mukuru w'ekitongore ky'ebyemishoro kuronda kutwazibwa nkowatakirize kukora ensharamu kwikiriza okwanga	

Okutereza obutikirizingana omugundi muringo.	Waba otikirizine n'ekishazigwemu, nobasa kuhandikira Kamishana Jenero(Commissioner General) kugira ngu akitereze arikwejunisa endijo miringo erikuba eragirigwe kurabira omuru Minisita wery'sente, pulanigi hamwe n'entunguka arikurabira omukiragiho. Eki nikibasa okwerekera ezindi shonga ez'empa mushoro ezokubasa kuba nizenda nguzirebe eryashazigwemu URA kugira ngu batahika nibijuzwa okwetombwitwa omuri Tax Appeals Tribunal.	
Akakiiko K'okushaba	Omuhiri w'omushoro atamazirwe n' ensharamu y'okuhakanisa kwe naabaasa kuhayo obwetaago bw'okugarukamu ensharamu omu kakiiko k'okushaba.	Omu biro makumi ashatu bwanyima y'okutungwa ensharamu
Kooti enkuru	Omuhiri w'omushoro atamazirwe n' ensharamu y' akakiiko k'okushaba nabaasa kuhayo okushaba omu kooti enkuru kugarukamu omu nsharamu Okushaba kooti enkuru nikwija kukorwa omu kukora okumanyisa okw'okushaba ow' omuhandiiki wa kooti enkuru	Omu biro makumi ashatu bwanyuma y'okuheebwa okumanyisiibwa kwensharamu
Obujunaanizibwa bw'okujurira	Okuhakanisa kwoona aha nsharamu erikukorwa mukuru w'ekitongore ky'eby'emishoro, obuzibu buri aha muhi w'omushoro kuha bwiino oku ensharamu egwire	
Ishe mateka eyahiguru	<ul style="list-style-type: none"> Tribunal yaba etikirize esharaho zawa, nobasa kushaba oyeyonjereyo ohandikire ishe mateka eyahiguru kugira ngu ebasee kugaruka omu sharaho zawe. Okwetombwitwa omuri ishe mateka eyahiguru nikukwogwa ekibandiko ky'okwetobwitwa kurabira omuri registrar wa ishe mateka enkuru. 	Omu biro makumi ashatu waheza kutungwa ekibandiko kyesharaho.
Ishe mateka ey'okwetobwitwa	Ishe mateka eyahiguru yaba etikirize esharaho zawa, nobasa kushaba oyenjereyo okwetombwitwa kwawe omuri Ishe mateka ey'okwetobwitwa kugira barebe omusharaho zawe. Okwetombwitwa oku nikuba nikurebuzwa ahabiragiho kushe Ishe mateka ey'okwetobwitwa n'eza kubuza Kandi eronde okwetombwitwa kwawe omubwira hamwe n'omukwegyendereza eshuba ebirangirire omukutarenga ebiro 60 kuruga ahizo ryokwijuzwa okwetombwitwa.	Omu biro makumi ashatu waheza kutungwa ekibandiko kyesharaho zawe ningashi omubwire obu ishe mateka ey'okwetobwitwa erikirize.
Ishe mateka enkuru	Ishe mateka ey'okwetobwitwa yaba etikirize esharaho zawa, nobasa kushaba oyenjereyo okwetombwitwa kwawe omuri Ishe mateka enkuru. Okwetombwitwa kukwasibweho satificate ya Ishe mateka ey'okwetobwitwa hamwe n'ebibuzo ery'ebiragiho ahamugasho muhango gw'abantu.	Ishe mateka enkuru n'eza kubuza Kandi eronde okwetombwitwa hatariho kukyererebwa ningashi okukyerebwa kube kukye Kandi eragirire ebironzirwe omukutarenga ebiro 30 kuruga ahizoba ery'okwijuzwa okwetombwitwa.

	<p>IMukama w'esharaho yayetaga kumugaruriza omushoro oguyashashure kurugirira ahari esharaho y'ekitongore ekikirizibwe nka Tribunal, Ishe mateka eyahiguru, Ishe mateka ey'okwetobwitwa ningashi Ishe mateka enkuru omushoro nigukushashurwa hamwe n'amagoba kurugirira ahabiragiyo eky'omushoro ekikwasigweho.</p> <p>Amagoba nigashashurwa kurugirira aha muhendo gw'okugarurizibwa omubwire oburikutandikana n'orunaku oru omushoro gw'okugarurizibwa gwashashubweho okuhisya aha mwezi ogwamuheru ogu watushashurireho.</p>	
--	---	--

Ebimwe aha bibonerezo by'okuhenda ebiragiyo by'omushoro

Omushashuzi w'omushoro arikuremwa kuhikiiriza obujunaanizibwa bwe naakora omushango, kandi naaheebwa ekibonerezo ky'omushoro na'magoba nk'okubihandiikirwe ahansi

Ekika kyo mushoro	Omushango	Ekibonerezo
Omushoro gwa Income tax	Okuremwa kushaba okwehandikisa na ab'eb'y'emishoro	Tezamu kabiri omuhendo gw'omushoro oguri kushashurwa omubwiire okuhika omuntu ahi arahereyo okushaba okwehaandikiisa niinga sh.1,000,000
	Okuremeererwa kuteekamu return yaawe omubwiire	Ekirikukira ahagati y'ebichweeka bibiri ahari igana eby'omushoro ogurikushashurwa otakaihireho empiha zoonza ezirikwiikirizibwa aha muhi w'omushoro niinga shs. 200,000 buri kwezi
	Okuremererwa kushashura omushoro gwoona (ogw'ahamuheru niinga provisional) Shashura omushoro gwoona ogw'ekibonerezo Shashura omushoro ogukwasirwe ninga ogurikwetaga kukwatwa aha bwire ninga butakahikire	Amagoba aha rurengo rurikwiingana obucweka bubiri ahari igana buri kwezi ahamuhendo gutashashwiirwe ogubazirwe kuruga aha'izooba okushashurwa kwabaire nikuza kubaho kuhika eizooba okushashurwa kuri kukorwa.
	Okuremwa kubiika ebitabo ebihikire	Tezaamu kabiri omuhendo gw'omushoro ogurikushashurwa omu kaire
Omushoro gwa VAT	Okuremwa kushaba okwehandiikisa n'ab'eb'yemishoro	Teezamu kabiri omuhendo gw'omushoro ogurikushashurwa omu kaire kutandika n'ekiro kyahamuheru eky'okuhayo obwetaago kuhika omuntu ahi arashabire niinga Commissioner General ahi araahandikye omuntu ogwe.
	Okuremwa..... omu biro ikumi nabitaano aha muheru gw'okwezi	Ekirikukira ahagati y'emitwaaro makumi abiri niinga Amagoba g'okuheebwa g' obucweka bubiri ahari igana kwetoorwa akaire ka return erikuba eri nyingi
	Okuremwa kushashura omushoro butakahikire ninga aha izooba eryo	Ekibonerezo ky'omushoro aha mushoro ogutashashwiire aha rurengo rw'obucweka bubiri ahari igana
	Okuremwa kubika ebitabo bihikire omu bwire bwe by'emishoro (okweezi kwa Calendar)	Tezamu kabiri omuhendo gw'omushoro ogurikushashurwa omuntu omukaire komushoro
Omushoro gwa Excise duty	Okuremwa kuhayo obwetaagi bwa raisinsi	Ekibonerezo kirikwingana omuhendo ogw'omushoro ogurikushashurwa omu bwire, kutandika n'eizooba ry'aha muheru ery'okuhayo obwetaagi kuhika omuntu arahandiikise obwetaagi.

	Okuremererwa kumaririza eby'etaago omu bwiire obuhairwe	Kirikukira ahagati ya 200000 niinga Amagoba agarikwihwaho ag'obucweeka bubiri ahari igana omu bwire obu return erikuba ekiriho.
	Okuremererwa kushashura omushoro	Amagoba g'obucweeka bubiri ahari igana aha mushoro ogurikubaanzibwa
Sitaampu y'omushoro	Okuremererwa kuteisaho Sitaampu y'omushoro	Ah'iguru ya okuteezamu omuhendo gw'omushoro ogutairwe aha by'amaguzi niinga ninga Obukaikuru makumi ataano
	Okukora ninga okugingirira Sitaampu y'omushoro	Ah'iguru ya okuteezamu omuhendo gw'omushoro ogutairwe aha by'amaguzi niinga Obukaikuru makumi abir
	Okugira eby'amaguzi ebitaine Sitaampu	Ah'iguru ya Okutezamu omuhendo gw'omushoro ogutairwe ah'abyamaguzi niinga Obukaikuru makumi ataano
	Okutungana ninga okugyezaho kutungana ninga okuguza sitaampu y'omushoro otaine kwiikirizibwa kwa Commissioner Genera	Ah'iguru ya Okutezamu omuhendo gw'omushoro ogutairwe ah'abyamaguzi niinga Obukaikuru ikumi
	Okuremererwa kuhayo ebikwatiraine n'omushoro nk'oku biri kushabwa commissioner	Obukaikuru makumi ataano

OBUHEEREZA, OFIISI N'ENAMBA Z' EKITONGORE KY'EBY'OMUSHORO

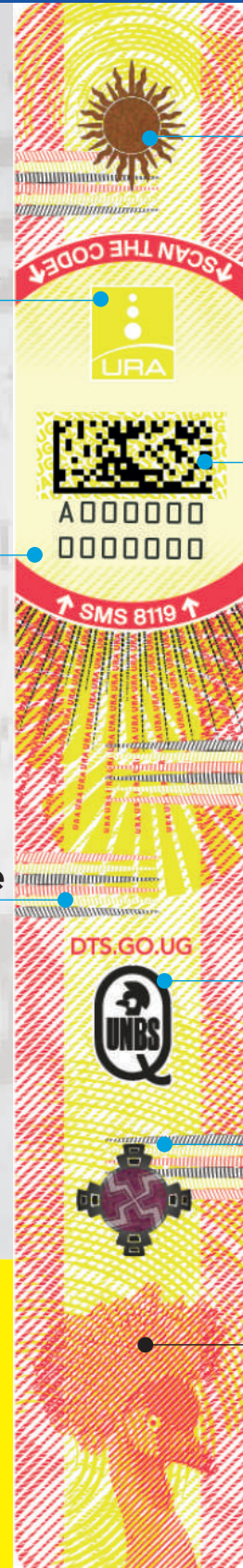
Ekyanga	Obuheereza ahi burikuheerwa	Emishoro Eri kukorwaho	Ahi turikushangwa	Enamba za Ofiisi (+256)
CENTRAL	URA Head Office	Domestic taxes and Customs	URA Tower, Plot M 193/4 Nakawa Industrial Area, P.O. Box 7279, Kampala	0323443610
	Public and Corporate Affairs	Public relations	16 th Floor, URA Tower	0417442054
	URA Headquarter Service Office (HSO)	Domestic taxes	URA Head Office, NIP building	0323442142
	Katwe Branch	Domestic taxes	Finance Trust Bank, Plot No 115 & 121.	0323444626
	William Street	Domestic taxes	Vision house, Behind Equatorial Mall next to Post Bank, Plot 68/70	0323443260
	Nakivubo Branch	Domestic taxes	Diamond Trust Bank, Ham Shopping	0323444636
	Entebbe	Domestic taxes	Plot Gowers road, Opp Entebbe Junior School	0323443636
	Nateete	Domestic taxes	Plot 125; Next to new police station Nateete Birus Mall	0323448006
	Mityana	Domestic taxes	Mityana T.C	0323445156
	Bwaise Branch	Domestic taxes	Diamond Trust Bank, Bombo Road	0323444635
	Kampala Road	Domestic taxes	Diamond Trust Building, opposite Cham Towers	0323443609
	Mukono	Domestic taxes	Mukono T.C	0323445221
	Nansana	Domestic taxes	Nansana Trading Center, Hoima road, Katonda ya bigera House	0323448009
	Kyaliwajjala	Domestic taxes	Martyrs Mall, Plot 1667; Kyaliwajjala Namugongo Kira Road	0323448001
	Masaka	Domestic taxes and Customs	Plot 31, Kampala Road, Masaka Municipality	0323444981

NORTHERN	Pakwach	Customs	Pakwach TC	0772140958
	Nebbi	Domestic taxes	Nebbi Town	0323443814
	Koboko	Domestic taxes	Koboko Town	0323445162
	Arua	Domestic taxes and Customs	Plot 1, Pakwach road, Arua Hill, Opp Arua playground	0323443506
	Kitgum	Domestic taxes	Kitgum Town	0323444825
	Moyo	Domestic taxes	Moyo Town	0323445177
	Padea	Customs	Padea (Uganda/DRC-Border)	0772142441
	Elegu	Customs	Elegu (Uganda/S Sudan - Border)	0772593232
	Lira	Domestic taxes	Plot No.5-7, Citadel Towers,3rd Floor, Obote Avenue, Lira Municipality	0323444890
	Gulu	Domestic taxes	Plot 26, Labwor road, Gulu	0323443751
EASTERN	Malaba	Customs	Malaba (UG/Kenya border)	0772141106
	Busia	Domestic taxes and Customs	Busia (UG/Kenya border)	0323443557
	Mbale	Domestic taxes and Customs	Plot1, Court road-Oval Plaza	0323444950
	Tororo	Domestic taxes	Tororo Town, Kampala- Busia Road, opp Children's park	0323445501
	Soroti	Domestic taxes	Soroti Town, Haridas road, near Doctor's plaza	0323445500
	Busitema	Customs	Busitema, Malaba Busia junction	0772142400
	Iganga	Domestic taxes and Customs	Iganga Town, Jinja-Malaba Highway, opp Posta Uganda	0323443803
	Jinja	Domestic taxes and Customs	Plot 2A, Spire road, Jinja Town	0323443840
	Moroto	Domestic taxes	Moroto Town	0323443756
WESTERN	Katuna	Customs	Katuna, Uganda Rwanda Boarder	0323444783
	Mirama hills	Customs	Mirama, Uganda Rwanda Boarder	0772140749
	Kabale	Domestic taxes	Plot 92, Mbarara road, opp. NSSF	0323443940
	Bushenyi	Domestic taxes	Ishaka Town, Basajja, Kasese road, next to KIU Branch	0323443541
	Mutukula	Customs	Mutukula, Uganda - Tanzania boarder	0772140389
	Fort portal	Domestic taxes and Customs	Plot 1, Ruhandika Street	0323443720
	Mbarara	Domestic taxes and Customs	Plot 3 B, Stanley Road	0323445037
	Rukungiri	Domestic taxes	Rukungiri town	0323445437
	Kyotera	Domestic taxes	Wotonava Building (Building with Letshego) Plot 316 Mutukula Road	0772141709
	Mpondwe	Customs	Mpondwe, Uganda, DRC Boarder	0772141005
	Hoima	Domestic taxes	Kitara courts building, Main Street	0323443780
	Masindi	Domestic taxes	Masindi town	0323445012
	Kasese	Domestic taxes	Finance Building, Rwenzori road opp teacher's corner	0323444752



Uganda Revenue Authority
DEVELOPING UGANDA TOGETHER

KAKASA



Sun Feature

URA Logo

QR Code

SMS Code

DTS Website

UNBS seal of Quality

Special Feature

Crested Crane Watermark

Avoid fake products!
Sodas, water, beers, wines, spirit and cigarettes

#KakasaWithDTS

Contact us: Website | www.ura.go.ug, Email | services@ura.go.ug
Call center/ Customer care | 0800 217 000, 0800 117 000

Follow us:





Uganda Revenue Authority
DEVELOPING UGANDA TOGETHER



Because of *you*

Millions of children have
access to a free education.

#EducationforAll

Get your free TIN on www.ura.go.ug

For more information call: 0800117000, 0800217000 (Toll free)
Email: services@ura.go.ug | www.ura.go.ug